



Toggle (Snap) Switch



**703X
SERIES**

SPECIFICATION

| | |
|------------------------------|---|
| RATING | : 15A 125VAC , 10A 250VAC (IN HOUSE TEST) 20A 125/250VAC (IN HOUSE TEST) |
| INSULATION RESISTANCE | : DC 500V 100MΩ OR MORE |
| CONTACT RESISTANCE | : DC 2-4V 1A 20mΩ OR LESS |
| WITHSTAND VOLTAGE | : AC 1500V FOR 1 Min |
| AMBIENT TEMPERATURE | : 0 °C TO 55 °C |
| ELECTRICAL LIFE | : 6,000 CYCLES |

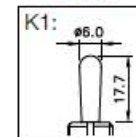
HOW TO ORDER

703 □ - □ - □ - □

SWITCH FUNCTION

| |
|----------------------|
| 7031 : ON-OFF |
| 7032 : ON-ON |
| 7033 : ON-OFF-ON |
| 7034 : (ON)-OFF |
| 7035 : ON-(ON) |
| 7036 : (ON)-OFF-(ON) |
| 7037 : ON-OFF-(ON) |

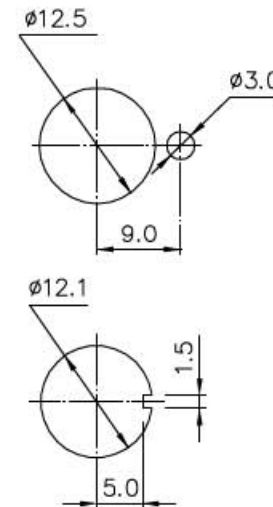
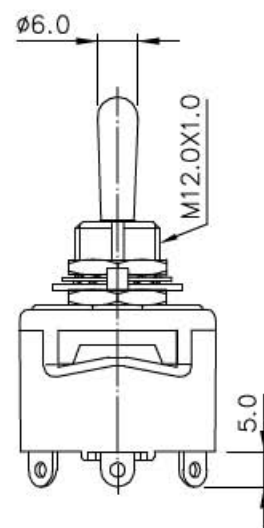
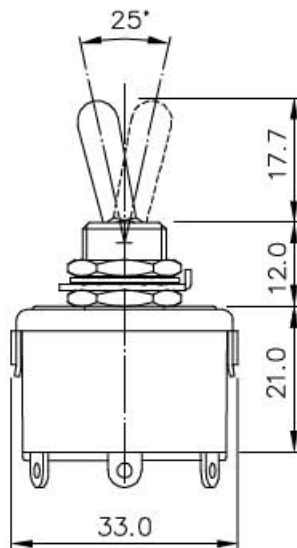
SHAFT



RATING

| | |
|---------------------------------|-------------------------------|
| C1: 20A 250VAC 20A 125VAC | T1: $\phi 2.1$ 4.9 |
| C1: 10A 250VAC 15A 125VAC | T2: 6.35x0.8 |
| C2: 10A 250VAC 15A 125VAC | T3: 4.75x0.8 |
| C3: 10A 250VAC 15A 125VAC | T4: $\phi 6.5$ |
| | T6: $\phi 4.0$ $\phi 6.5$ |
| | T11: 1.6 |
| | T14: $\phi 3.2$ $\phi 6.5$ |
| | T12: 6.35x0.8 $\phi 2.1$ |

TERMINAL



PANEL LAYOUT