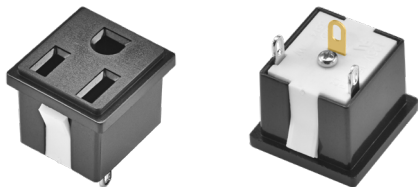


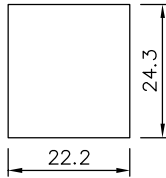
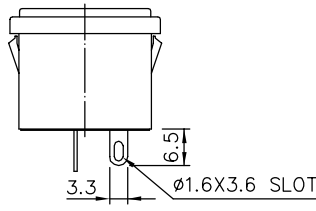
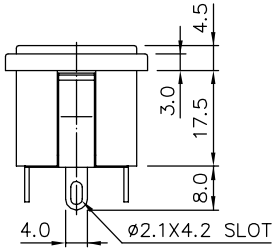
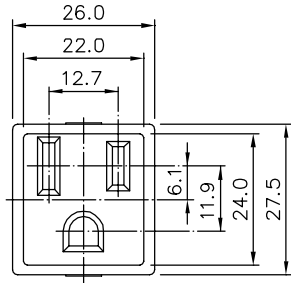
3514 SERIES

SPECIFICATION



RATING:	15A 125VAC
INSULATION RESISTANCE:	DC 500V 100MΩ OR MORE
WITHSTAND VOLTAGE:	AC 1500V FOR 1 Min
AMBIENT TEMPERATURE:	65°C

SIZE



MOUNTING HOLE  
(FOR REFERENCE)

PANEL THICK { 1.0~1.2  
2.0~2.5