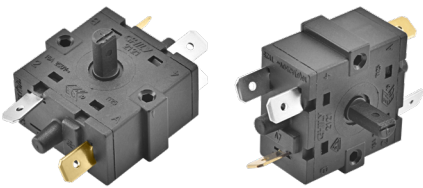
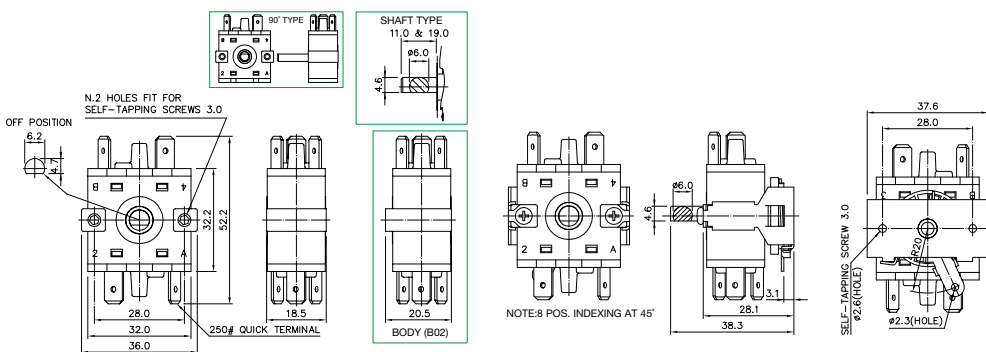


## SPECIFICATION



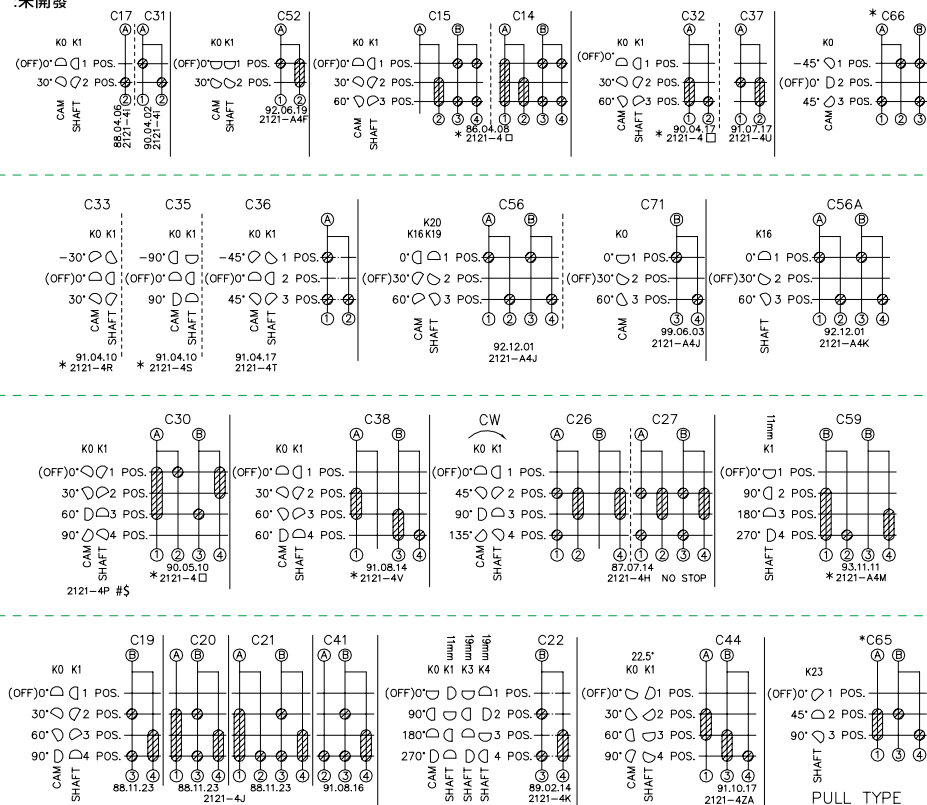
RATING:	16A 125/250VAC (UL, CUL)
INSULATION RESISTANCE:	DC 500V 100MΩ OR MORE
CONTACT RESISTANCE:	DC 2-4V 1A 20mΩ OR LESS
WITHSTAND VOLTAGE:	AC 1500V FOR 1 Min
AMBIENT TEMPERATURE:	0~105°C
ELECTRICAL LIFE:	6,000 CYCLES

## SIZE



## CIRCUIT

\*:未開發



JUST 90° TYPE SINGLE POLE

PULL TYPE