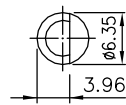
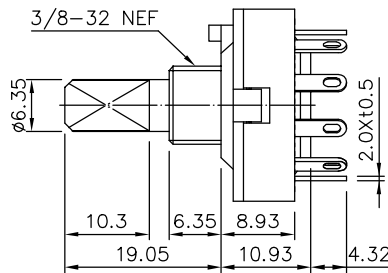
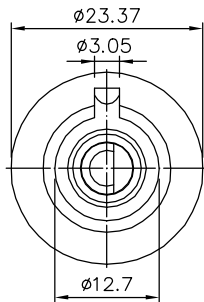




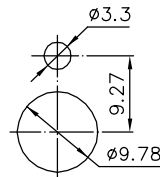
1107
SERIES

SPECIFICATION

RATING	: 5A 125VAC , 2.5A 250VAC (UL,C-UL) 0.5A 125VDC
INSULATION RESISTANCE	: DC 500V 100MΩ OR MORE
CONTACT RESISTANCE	: DC 2-4V 1A 20mΩ OR LESS
WITHSTAND VOLTAGE	: AC 1500V FOR 1 Min
AMBIENT TEMPERATURE	: 0 °C TO 55 °C
ELECTRICAL LIFE	: 6,000 CYCLES



OFF POSITION



PANEL MOUNTING

C10

POSITION	CIRCUIT	TERMINAL NO.									
		1	2	3	4	5	6	7	8	9	10
POS.1	0°	○				○	○				○
POS.2	36°	○	○				○	○			
POS.3	72°		○	○				○	○		
POS.4	108°			○	○				○	○	
POS.5	144°				○	○				○	○

C04

POSITION	CIRCUIT	TERMINAL NO.									
		1	2	3	4	5	6	7	8	9	10
POS.1	0°	○									○
POS.2	36°	○	○								
POS.3	72°		○	○							
POS.4	108°			○	○						

C14

POSITION	CIRCUIT	TERMINAL NO.									
		10	1	2	3	4	5	6	7	8	9
POS.1	0°	○	○				○	○			
POS.2	36°		○	○				○	○		
POS.3	72°			○	○				○	○	
POS.4	108°				○	○				○	○

C03

POSITION	CIRCUIT	TERMINAL NO.									
		1	2	3	4	5	6	7	8	9	10
POS.1	0°	○									○
POS.2	36°	○	○								
POS.3	72°		○	○							

C17

POSITION	CIRCUIT	TERMINAL NO.									
		1	2	3	4	5	6	7	8	9	10
POS.1	0°	○									○
POS.2	36°	○	○								
POS.3	72°	○						○			

REMARK: C17(TERMINAL NO.1 & 8 MUST BE SHORTED.)

C18

POSITION	CIRCUIT	TERMINAL NO.									
		1	2	3	4	5	6	7	8	9	10
POS.1	0°	○									○
POS.2	36°	○	○								
POS.3	72°	○						○			
POS.4	108°	○							○		
POS.5	144°	○		○							

REMARK: C18(TERMINAL NO.1 & 8 ,
TERMINAL NO.1 & 5 MUST BE SHORTED.)

CIRCUIT